

# Truex Lighting

## “FHB”- SERIES LINEAR FLUORESCENT HIGH BAY FIXTURE MODEL FHB14-8T5HO 8-LAMP T5HO



### BENEFITS OF FLUORESCENT HIGH BAY FIXTURES

- 30-50% energy reduction for comparable light levels
- Superior Lumen Maintenance
- Improved Color Rendering. Fluorescent lamps maintain consistent color through life of lamp and have a color rendering index (CRI) of 85
- Instant On/Off. In the event of power interruption, fluorescent lamps are back on instantly

### FIXTURE DESCRIPTION:

The FHB series is a solution for high mounting height industrial or retail applications. The FHB optic is optimized to provide outstanding performance for T5HO lamp applications. The FHB series high lumen package allows the benefits of fluorescent to be applied at high mounting heights that were traditionally exclusive to H.I.D. The primary benefits include exceptional color rendering, high system efficacy, high reflectance with aluminum reflector, instant on/instant re-strike and uniform brightness control. Primary applications include retail, shopping malls, industrial and recreational environments.

### PRODUCT FEATURES:

Ballast housing, end plates and socket tracks are die formed cold rolled steel. The channel provides strength and KO's for easy installation. Die formed external reflectors are high reflectance specular material.

### ELECTRICAL:

Ballasts are energy efficient, thermally protected, automatic resetting, Class P, high power factor, CBM, sound rated A, and are positively secured by mounting bolts.

### FINISH:

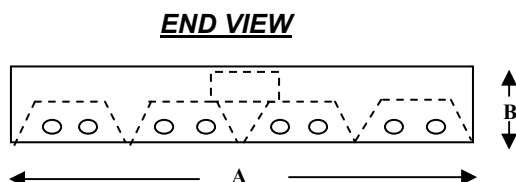
All steel parts are powder coated white after assembly

### FIXTURE DIMENSIONS:

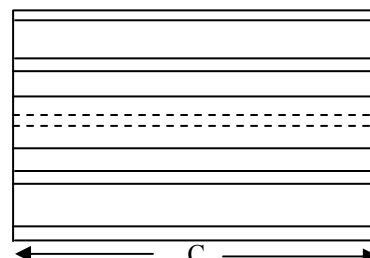
A - 25.84"

B - 3.35"

C - 46.20"



TOP VIEW



**PHOTOMETRIC DATA:**

**Zonal Lumens  
Cone Between Lumens**

0.0 0.0- 2.5 81.44  
5.0 2.5- 7.5 667.98  
10.0 7.5- 12.5 1402.16  
15.0 12.5- 17.5 2119.94  
20.0 17.5- 22.5 2723.88  
25.0 22.5- 27.5 3148.74  
30.0 27.5- 32.5 3308.00  
35.0 32.5- 37.5 3185.91  
40.0 37.5- 42.5 3022.80  
45.0 42.5- 47.5 2792.15  
50.0 47.5- 52.5 2559.42  
55.0 52.5- 57.5 2374.13  
60.0 57.5- 62.5 2207.33  
65.0 62.5- 67.5 2046.81  
70.0 67.5- 72.5 1869.91  
75.0 72.5- 77.5 1530.08  
80.0 77.5- 82.5 1009.17  
85.0 82.5- 87.5 408.27  
90.0 87.5- 92.5 52.65

**Average Luminaire Luminance (cd/m<sup>2</sup>):**

0 45 90  
0 17596.86 17596.86 17596.86  
45 18040.79 10666.39 8422.12  
50 17890.40 9005.40 8727.53  
55 17358.28 8230.01 9947.03  
60 16824.70 8205.52 11278.68  
65 16280.29 9266.86 12856.27  
70 14942.71 11154.40 14491.59  
75 12653.98 12225.17 13997.04  
80 9801.68 11318.60 11536.51  
85 7449.99 6848.58 5738.94

**Coefficients of Utilization - Zonal Cavity Method:**

pfc = 0.20  
pcc .8 .7 .5  
pw .7 .5 .3 .1 .7 .5 .3 .1 .5 .3 .1  
RCR  
0 108 108 108 108 106 106 106 106 101 101 101  
1 99 94 90 87 96 92 89 85 88 85 83  
2 90 82 76 71 87 81 75 70 77 73 68  
3 82 73 65 59 80 71 64 59 69 63 58  
4 76 65 57 51 73 64 56 51 61 55 50  
5 70 58 50 44 68 57 50 44 55 49 43  
6 65 53 45 39 63 52 44 39 50 43 38  
7 60 48 40 35 59 47 40 35 46 39 34  
8 56 44 36 31 55 43 36 31 42 36 31  
9 53 41 33 28 51 40 33 28 39 33 28  
10 49 38 30 26 48 37 30 26 36 30 26