

Truex Lighting

**“FHB”- SERIES LINEAR FLUORESCENT HIGH BAY FIXTURE
MODEL FHB14-12T5HO
12-LAMP T5HO**



BENEFITS OF FLUORESCENT HIGH BAY FIXTURES

- 30-50% energy reduction for comparable light levels
- Superior Lumen Maintenance
- Improved Color Rendering. Fluorescent lamps maintain consistent color through life of lamp and has a color rendering index (CRI) of 85
- Instant On/Off. In the event of power interruption, fluorescent lamps are back on instantly

FIXTURE DESCRIPTION:

The FHB14-12T5HO is designed specifically for high mounting height / high ambient temperature industrial applications. The FHB14-12T5HO design allows heat produced by the T5HO lamps to be dissipated up through the middle of the fixture and away from the ballasts that are positioned in dual ballast housings on the outside of the fixture. The “FHB” optic design is optimized to provide outstanding performance for T5HO lamp applications. The primary benefits include exceptional color rendering, high system efficacy, high reflectance aluminum reflector, program start ballasts, instant re-strike and uniform brightness control.

PRODUCT FEATURES:

Ballast housing, end plates and socket tracks are die formed cold rolled steel. The channel provides strength and KO's for easy installation. Die formed external reflectors are high reflectance specular material.

ELECTRICAL:

Ballasts are high ambient, program start, energy efficient, thermally protected, automatic resetting, Class P, CBM, sound rated A, and are positively secured by mounting bolts.

LISTING:

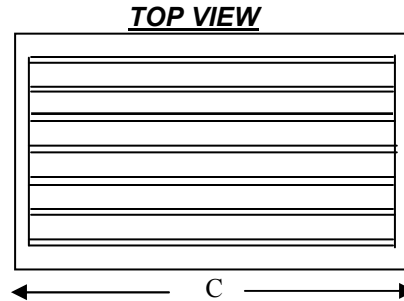
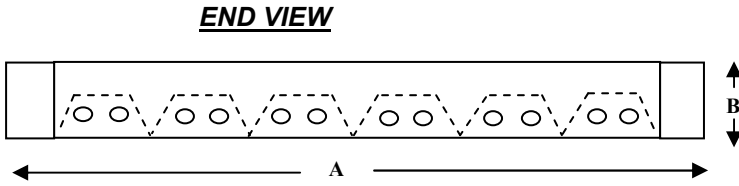
ETL 3097700 / UL1598 compliant

FINISH:

All steel parts are powder coated white after assembly

FIXTURE DIMENSIONS:

- A - 39.76"
- B - 3.35"
- C - 46.20"



PHOTOMETRIC DATA:

Zonal Lumens

Cone Between Lumens

0.0	0.0- 2.5	132.56
5.0	2.5- 7.5	1022.17
10.0	7.5- 12.5	2090.93
15.0	12.5- 17.5	3143.21
20.0	17.5- 22.5	4056.44
25.0	22.5- 27.5	4692.98
30.0	27.5- 32.5	4897.19
35.0	32.5- 37.5	4825.46
40.0	37.5- 42.5	4574.97
45.0	42.5- 47.5	4200.31
50.0	47.5- 52.5	3857.12
55.0	52.5- 57.5	3561.64
60.0	57.5- 62.5	3353.83
65.0	62.5- 67.5	3061.05
70.0	67.5- 72.5	2774.17
75.0	72.5- 77.5	2316.45
80.0	77.5- 82.5	1519.58
85.0	82.5- 87.5	599.90
90.0	87.5- 92.5	66.37

Average Luminaire Luminance

(cd/m²):

0	45	90
0	18990.80	18990.80 18990.80
45	17900.67	11001.02 8457.17
50	17821.40	9299.54 8830.09
55	17347.25	8258.10 10009.26
60	17100.71	8514.18 11359.85
65	15665.94	9561.11 13331.24
70	14274.55	11398.70 15137.03
75	12858.92	12718.37 15212.29
80	9893.75	12083.27 12043.61
85	7376.70	6948.59 6466.97

Coefficients of Utilization - Zonal

Cavity Method:

pfc = 0.20
pcc .8 .7 .5
pw .7 .5 .3 .1 .7 .5 .3 .1 .5 .3 .1
RCR

0	108	108	108	108	106	106	106	106	101	101	101
1	99	94	90	87	96	92	89	85	88	85	83
2	90	82	76	71	88	81	75	70	77	73	68
3	82	73	65	59	80	71	64	59	69	63	58
4	76	65	57	51	73	64	56	51	61	55	50
5	70	58	50	44	68	57	50	44	55	49	43
6	65	53	45	39	63	52	44	39	50	43	38
7	60	48	40	35	59	47	40	35	46	39	34
8	56	44	36	31	55	43	36	31	42	36	31
9	53	41	33	28	51	40	33	28	39	33	28
10	49	38	30	26	48	37	30	26	36	30	26