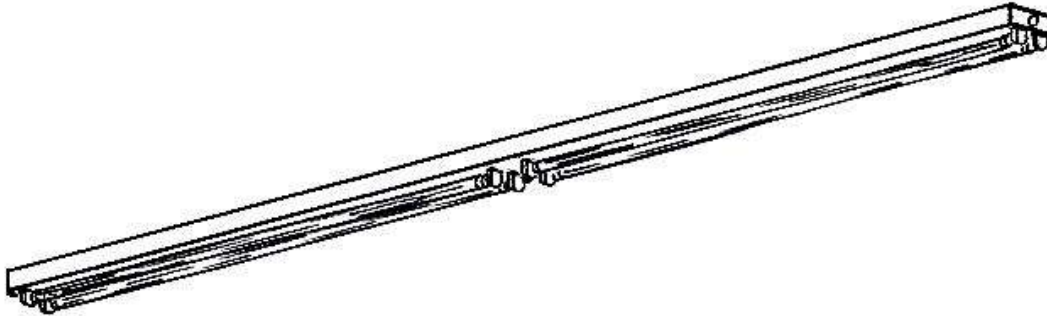


## CS18-4T8

### LINEAR FLUORESCENT STRIP FIXTURE 4-LAMP T8



#### FIXTURE FEATURES

- Applications include commercial, industrial, retail and residential
  - Heavy duty fixture housing with reinforcing ribs for added rigidity
  - All metal surfaces are white powder coated after fabrication
  - Lock tight rotary lock lamp holders for positive lamp contact
  - Fixture end caps are securely connected to the main body for added rigidity and ease of installation
  - Fixture can be individual or row-mounted using end plate knock-outs
  - Fixture can be surface mounted or suspended
  - 1/4 turn fasteners retain the ballast cover for quick and easy installation
  - Quick disconnect is included for ease of installation.
  - Heavy gauge die embossed steel housing for maximum strength
  - Engineered for use with T8, 32W lamps (not included)

#### FIXTURE CONSTRUCTION

Fixtures are manufactured using die-embossed, code gage steel

#### FINISH

All steel parts of the fixture are white powder coated after fabrication eliminating sharp unpainted edges and corners

#### BALLAST AND ELECTRICAL

Ballasts are 120-277 volt, energy efficient electronic, thermally protected, automatic resetting, class P, high power factor and sound rated A. Lamp holders are positive stop locking type

#### MOUNTING

Fixtures can be surface mounted or hung by cable or chain. Fixtures can also be hung as individual units or row-mounted using end plate knock-outs.

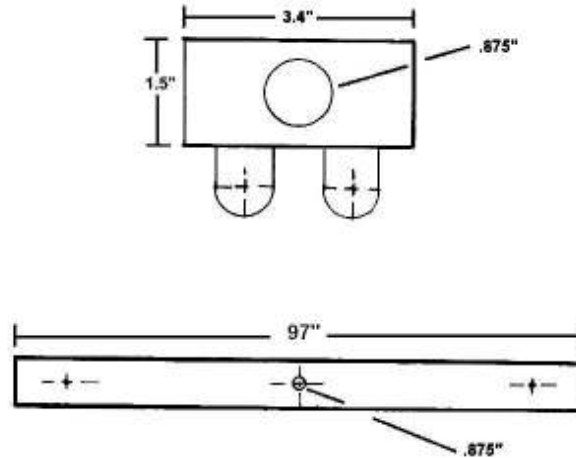
#### LISTING

ETL 3097700 listed, conforms to UL 1598. Certified to CSA C22.2 No. 250.0.

#### OPTIONAL ACCESSORIES

- Wire guard
- Aircraft type hanging cable

## FIXTURE DIMENSIONS



## PHOTOMETRIC DATA

### Coefficients Of Utilization - Zonal Cavity Method

Effective Floor Cavity Reflectance: 20%

RCC %:	80				70				50				30				10				0			
RW %:	70	50	30	0	70	50	30	0	50	30	20	50	30	20	50	30	20	0	50	30	20	0		
RCR: 0	1.06	1.06	1.06	1.06	1.02	1.02	1.02	.75	.93	.93	.93	.86	.86	.86	.78	.78	.78	.75	.78	.78	.78	.75		
	1.94	.89	.84	.79	.90	.85	.80	.58	.78	.74	.71	.71	.68	.65	.65	.62	.60	.57	.65	.62	.60	.57		
	2.84	.76	.68	.62	.80	.72	.66	.46	.66	.61	.56	.60	.56	.52	.55	.51	.48	.45	.55	.51	.48	.45		
	3.76	.65	.57	.50	.72	.62	.55	.38	.57	.51	.45	.52	.47	.42	.47	.43	.39	.37	.47	.43	.39	.37		
	4.69	.57	.48	.42	.66	.55	.47	.32	.50	.43	.38	.46	.40	.35	.42	.37	.33	.30	.42	.37	.33	.30		
	5.63	.51	.42	.35	.60	.48	.40	.27	.44	.37	.32	.41	.35	.30	.37	.32	.28	.26	.37	.32	.28	.26		
	6.58	.45	.36	.30	.55	.43	.35	.24	.40	.33	.28	.36	.31	.26	.33	.28	.24	.22	.33	.28	.24	.22		
	7.54	.41	.32	.26	.51	.39	.31	.21	.36	.29	.24	.33	.27	.23	.30	.25	.21	.19	.30	.25	.21	.19		
	8.50	.37	.29	.23	.47	.35	.28	.18	.33	.26	.21	.30	.24	.20	.28	.23	.19	.17	.28	.23	.19	.17		
	9.46	.34	.26	.20	.44	.32	.25	.16	.30	.23	.19	.28	.22	.18	.26	.21	.17	.15	.26	.21	.17	.15		
	10.43	.31	.23	.18	.41	.30	.23	.15	.28	.21	.17	.26	.20	.16	.24	.19	.15	.13	.24	.19	.15	.13		

### Zonal Lumen Summary

### Lumens Per Zone

Zone	Lumens	% Lamp	% Luminaire	Zone	Lumens	% Total	Zone	Lumens	% Total
0-30	1,681.7	14.5%	15.6%	0-10	195.8	1.8%	90-100	595.0	5.5%
0-40	2,864.3	24.7%	26.6%	10-20	573.7	5.3%	100-110	558.3	5.2%
0-60	5,610.0	48.4%	52.1%	20-30	912.2	8.5%	110-120	411.5	3.8%
60-90	3,107.4	26.8%	28.8%	30-40	1,182.6	11.0%	120-130	275.1	2.6%
70-100	2,373.1	20.5%	22%	40-50	1,348.2	12.5%	130-140	147.9	1.4%
90-120	1,564.8	13.5%	14.5%	50-60	1,397.6	13.0%	140-150	57.4	0.5%
0-90	8,717.4	75.1%	80.9%	60-70	1,329.3	12.3%	150-160	8.8	0.1%
90-180	2,054.6	17.7%	19.1%	70-80	1,090.2	10.1%	160-170	0.5	0%
0-180	10,772.0	92.9%	100%	80-90	687.9	6.4%	170-180	0.2	0%